



Season 63 Director Application Information

Thank you for your interest in applying to fill one of the six director positions for our award-winning community theatre company's 2025/26 season.

Here is some important information:

1. A single committee will select both our directors and our productions (plays and/or musicals) for next season. We welcome your play/musical suggestions to assure our directors are working on plays they love, bringing artistic passion and great enthusiasm and commitment to the production they are leading. We are particularly interested in plays/musicals showing diversity in playwrights, characters, and stories. Of course, we want plays that will be enthusiastically received by our audiences and that will be practicable on our admittedly modest stage.
2. In relation to practicability, the following page includes basic information about our playhouse (located at 5691 Harlem Road, Galena) and its resources.
3. Exact production dates are not yet set, but Curtain Players customarily stages shows in September, late October/early November, late November/early December, February, March/April, and May. Each production runs a minimum of eight performances over three weekends; certain productions may warrant an extra matinee, due to expected audience interest. Exact dates will be emailed as soon as they're available.
4. To apply for a director's position, please submit a theatrical resume along with the completed application form attached to this email before 11:59 pm, August 31, 2024. The committee is planning to conduct interviews with finalists chosen from the pool of applicants in September.
5. As an applicant, you should be prepared to discuss the plays you are proposing for production and to provide your reasons for wanting to direct your choice or choices. You will be asked to share your working process and to discuss your directing philosophy. In addition, you may be asked to provide an electronic copy (legally obtained and sharable) or hardcopy script of one or more of your suggested plays, if available.
6. Your production budget will be \$800. This does not include stipends or royalties. Production budget covers the typical expenses for set construction and dressing, properties, costumes, etc.

7. Please be aware that members of the Curtain Players Board of Directors are permitted to apply; however they receive no special consideration in the selection process.

Curtain Players offers each director a \$250 honorarium.

Please email completed application materials by **August 31, 2024 to season.selection@curtainplayers.org**. If you are unable to email your application, please mail it to: Curtain Players Season Selection Committee, PO Box 1143, Westerville OH 43086 so that it is received by the due date.

Questions about Curtain Players and/or the selection process may likewise be sent via email to season.selection@curtainplayers.org.

Sincerely,

Members of the Curtain Players 63rd Season Selection Committee

Time for Season Selection

- Deadline for application – August 31, 2024, 11:59 pm
- Director interviews - begin week of September 9, 2024
- Committee begins reviewing scripts – week of September 23, 2024
- Committee will begin finalizing a season proposal end of October
- Season selection approval – November board meeting*

* It is possible that the board approval may be delayed until the December board meeting.

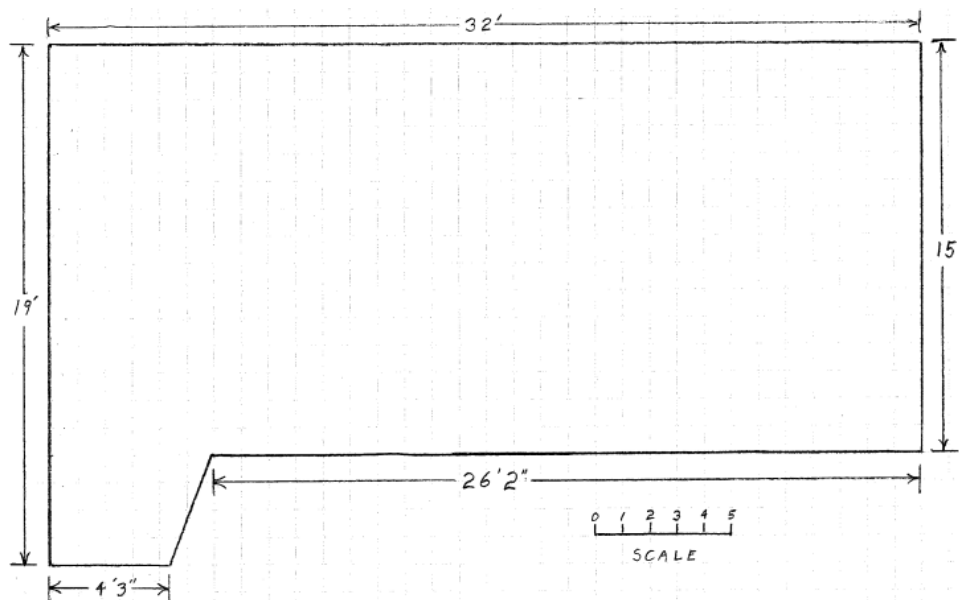
Summary Description of Theatre and Resources

Physical Layout of the Theater

Curtain Players Theater is a 78 seat performance space with the seating arranged in 6 rows of 13 seats each. The first row of seating is 18 inches from the stage.

The stage is approximately 15 feet by 32 feet as indicated in the diagram below. The ceiling height over the stage is 10 feet 4 inches. There is no fly. No trap doors exist in the stage floor. We do have a grid system on the ceiling above the stage for hanging curtains, small lights, etc.

There are 3 possible exits from the stage/backstage area. There is one 3 foot door on the stage right wall approximately 6 feet from the back wall which leads to the Green Room. There is a 3 foot wide stairway located down stage right which leads to the Audience Left aisle which is 6 feet wide. There is a 20 inch escape stair located down stage left which leads to the Audience Right aisle which is 33 inches wide.



Scenery (flats and platforms) in stock

- Our Broadway-style flats are 10' tall, and we probably have an adequate supply for your production.
- We have a number of doors already in frames in flats.
- We are unable to fly anything.
- Because of our relatively low ceiling, you are rather limited in what can be done with risers or other changes to floor height, but we do have several 6 inch platforms in assorted sizes.

Lighting Capabilities

- Placement of larger-sized lighting instruments is limited by our relatively low ceiling (i.e. they ordinarily cannot be located directly over the stage). Curtain Players Theater is equipped with a 32 channel lighting control panel. This unit controls eight 4-channel dimmers.